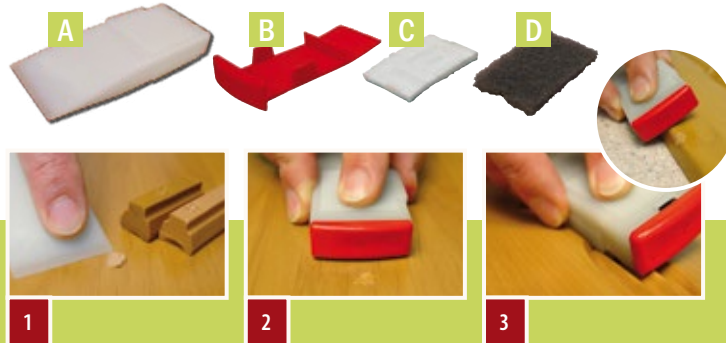


## IT'S JUST SO EASY...

**The Special Fillers Applicator consists of:** 1) Plastic body with grooves to remove all König waxes and Ceramic Filler 2) Red cleaning comb to clean the grooves 3) Sanding & Polishing Cloth 4) Grey Sanding Pad



**Working with the leading edge:** The leading edge is used not only to apply Soft Wax (see picture above), but also to strip off Quick Filler and Hard Wax Matt.

**Working with the grooves of the Special Fillers Applicator:** Use the pointed grooves on the flat area to level off excess filler (see picture 2). Always use rounded grooves on edges. Use on inner edges: Use rounded grooves (∩) on rounded edges and pointed grooves (∧) on rectangular, sharp inner edges.



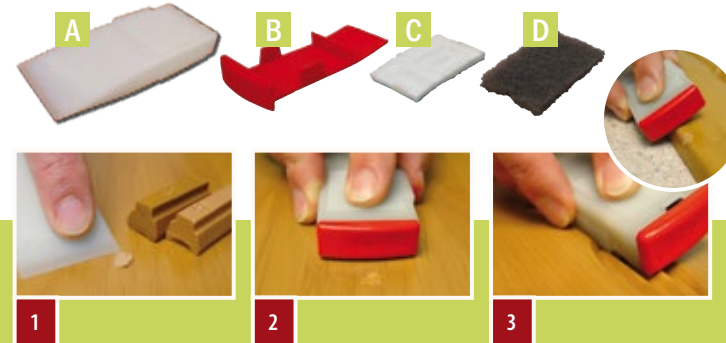
**Sanding & Polishing Cloth:** Use the white side of the cloth to dull and the green side to polish the filled area.

**Sanding and polishing:** The dark sanding pad is used to sand and to strip off hard filler residue (e.g. Hard Wax and Hard Wax PLUS).

**Cleaning of the Special Fillers Applicator:** Use the jagged comb of the inlet part to clean the body of the Special Fillers Applicator (if necessary, with warm water).

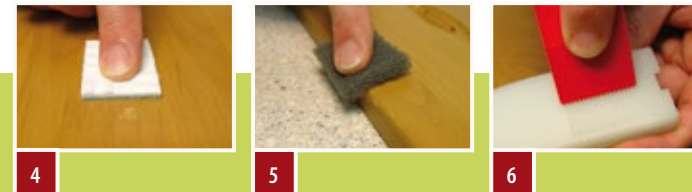
## IT'S JUST SO EASY...

**The Special Fillers Applicator consists of:** 1) Plastic body with grooves to remove all König waxes and Ceramic Filler 2) Red cleaning comb to clean the grooves 3) Sanding & Polishing Cloth 4) Grey Sanding Pad



**Working with the leading edge:** The leading edge is used not only to apply Soft Wax (see picture above), but also to strip off Quick Filler and Hard Wax Matt.

**Working with the grooves of the Special Fillers Applicator:** Use the pointed grooves on the flat area to level off excess filler (see picture 2). Always use rounded grooves on edges. Use on inner edges: Use rounded grooves (∩) on rounded edges and pointed grooves (∧) on rectangular, sharp inner edges.



**Sanding & Polishing Cloth:** Use the white side of the cloth to dull and the green side to polish the filled area.

**Sanding and polishing:** The dark sanding pad is used to sand and to strip off hard filler residue (e.g. Hard Wax and Hard Wax PLUS).

**Cleaning of the Special Fillers Applicator:** Use the jagged comb of the inlet part to clean the body of the Special Fillers Applicator (if necessary, with warm water).